



Powerful Imagery to Better Understand Your World

Vexcel Data Program provides industries around the world the highest caliber of aerial imagery and geospatial data available. Using its marketing-leading UltraCam sensors and a dedicated fleet of aircraft, Vexcel is the only professional aerial imagery program to capture both urban and rural areas at an unprecedented scale. Together, its urban and wide area capture programs cover more than 20 countries, including Australia, United States, Japan, United Kingdom, and Western Europe.



A comprehensive library of location data

Every pixel, every data point collected is sent through Vexcel's world-class processing pipeline to create a consistent, rich, and robust library of products. The result: Better geospatial intelligence and insights for you to solve real-world problems with confidence. See your world like never before with Vexcel.



Coverage

Collecting over 10.9 million km² in 20+ countries.



Cameras

Using our award-winning UltraCam sensors.



Fleet

Deploying a dedicated fleet of survey aircraft.



Connect

Supporting ArcGIS, APIs & standard map services.

Aerial Imagery and Geospatial Data Products



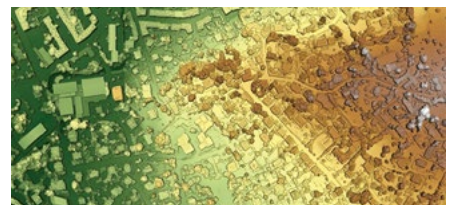
True Ortho

View major cities and urban areas from a super-detailed, top-down view (7.5cm resolution). See imagery without building lean (parallax) and no visible seamlines.



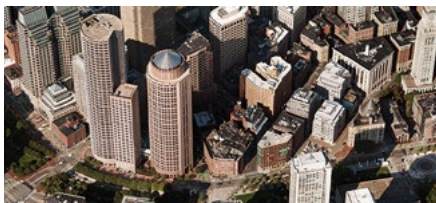
Multispectral

See the unseeable. Vexcel offers near-infrared (NIR) and color-infrared (CIR) ortho imagery. Quickly categorize and identify vegetation, impervious surfaces and more.



Elevate

Understand the earth's surface and human-made objects with Digital Surface Model (DSM) and Digital Terrain Model (DTM) data. Take your project modeling to a new level.



Oblique

Captured at a 45-degree angle, Oblique imagery features a bird's-eye view of buildings and properties. Unlike satellite or street-side imagery, Oblique helps you see a property from multiple directions, at a resolution of 7.5cm or better. Virtually walk properties to gain better insights.



Ortho

This top-down imagery provides consistent views across wide areas, connecting urban and rural locations. Great for customers who need imagery of less-populated regions or nationwide coverage. Resolution: 15-20cm.



Building Footprints & Property Attributes

Increase your visualization across millions of buildings and dwellings. See building outlines and analyze property-level attributes (pools, trampolines, solar panels, roof types and more).

A Dedicated Fleet



Vexcel manages its own fleet of aircraft and aerial operations. This gives the team great mobility to direct aircraft surveys based on weather, season, and location throughout the year.

Planes are outfitted with award-winning UltraCam sensors, designed and manufactured by Vexcel Imaging. Featuring the latest in sensor technology, like CMOS-based architecture and Revolutionary Adaptive Motion Compensation (AMC), Vexcel sensors are radiometrically and geometrically calibrated to collect the highest quality aerial imagery in the market.



Unmatched Accuracy

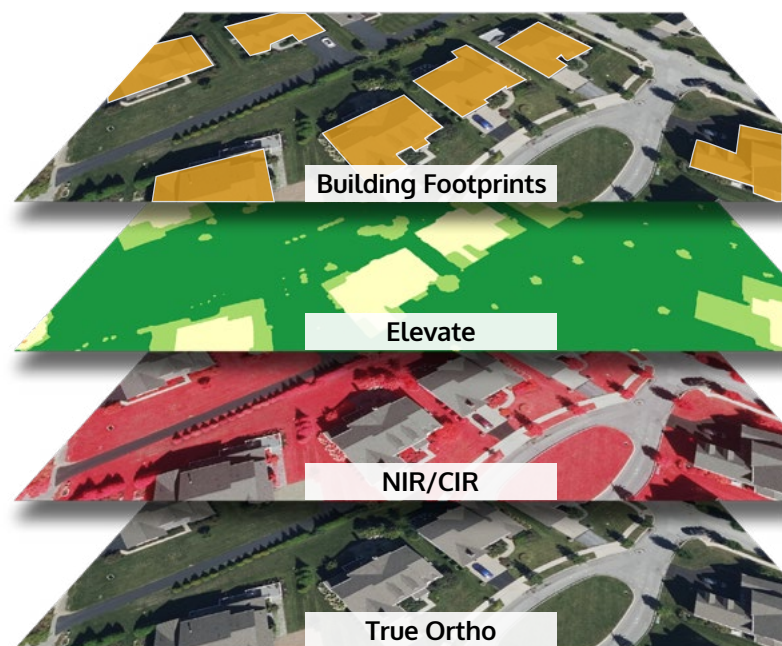
Great location data demands great accuracy. Without it, your data is misleading, and quite possibly, useless. Vexcel matches its aerial imagery against professional-grade ground control points. Our urban area capture program (7.5cm) is accurate to within a two-pixel standard deviation. Accuracy is also key in 3D measurements and running analytic solutions powered by artificial intelligence (AI) and machine learning (ML).

Layers of Truth

With Vexcel, you gain access to geospatial information with a pixel-to-data match across multiple products and derivatives. From start to finish, our data goes through a consistent collection and processing pipeline. That means every image, every data point at every location is consistently accurate with no shifts or irregularities.

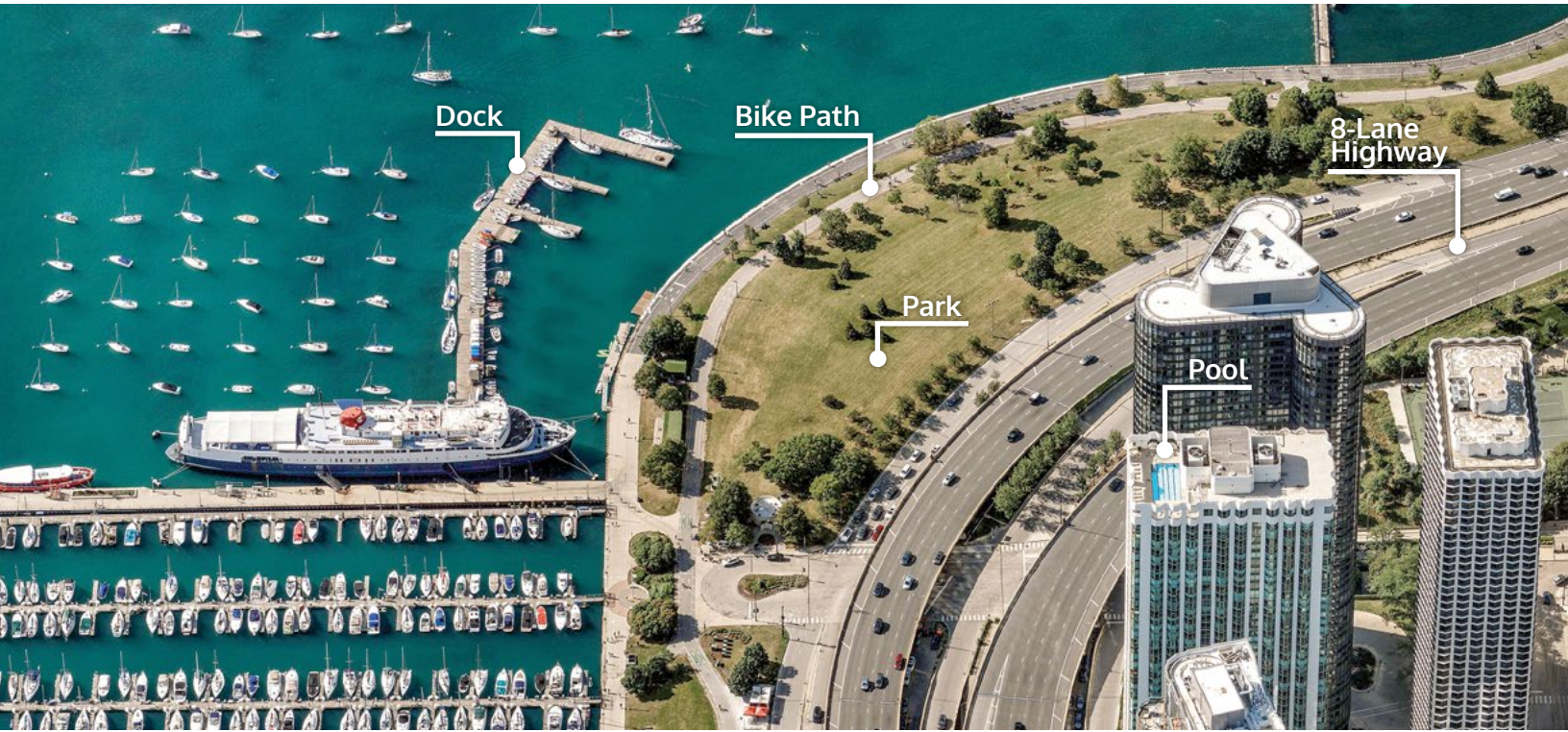
Map Services & Integrations

Work from home or at the office by streaming data from the cloud. Bring Vexcel's imagery and data inside your preferred GIS/CAD platform to create a richer, more current visual experience. Vexcel supports several delivery formats, including ArcGIS, REST APIs, standard map services (WTMS), and more. Or access imagery online at app.vexceldata.com. Need more security or offline access? Ask our team about on-prem delivery options.



Shaping the Future with Aerial Data

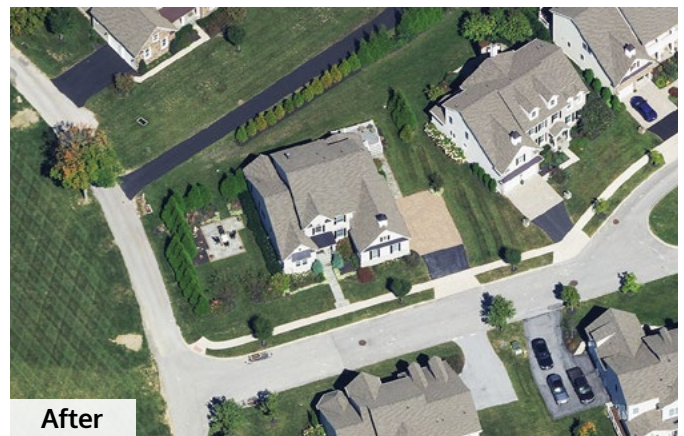
An image can tell you so many things—it's more than just a pretty picture. Go beyond what you can see and start extracting valuable insights. Use this data to develop the next generation of Smart Cities or 5G networks, create powerful HD maps, and so much more.



Use Vexcel's historic imagery to identify and track property changes year over year, or after a major disaster.



Before



After

The world's largest aerial imagery program — at your fingertips

Discover more about Vexcel and the many benefits for your industry at vexceldata.com

