



VEXCEL
DATA PROGRAM

POWERFUL DATA,
STUNNING IMAGERY

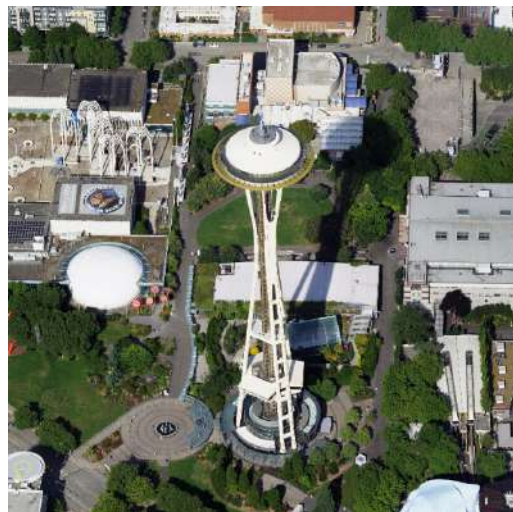
Los Angeles, CA

AGENDA



OVERVIEW

Discover how Vexcel built—and maintains—the world's largest aerial imagery library



DATA PROGRAMS IN 20+ COUNTRIES

From coast-to-coast, Vexcel collects urban and rural imagery



PRODUCTS & ACCURACY

Multiple data products provide choice to end users, along with unmatched accuracy and clarity



PLATFORMS & INTEGRATIONS

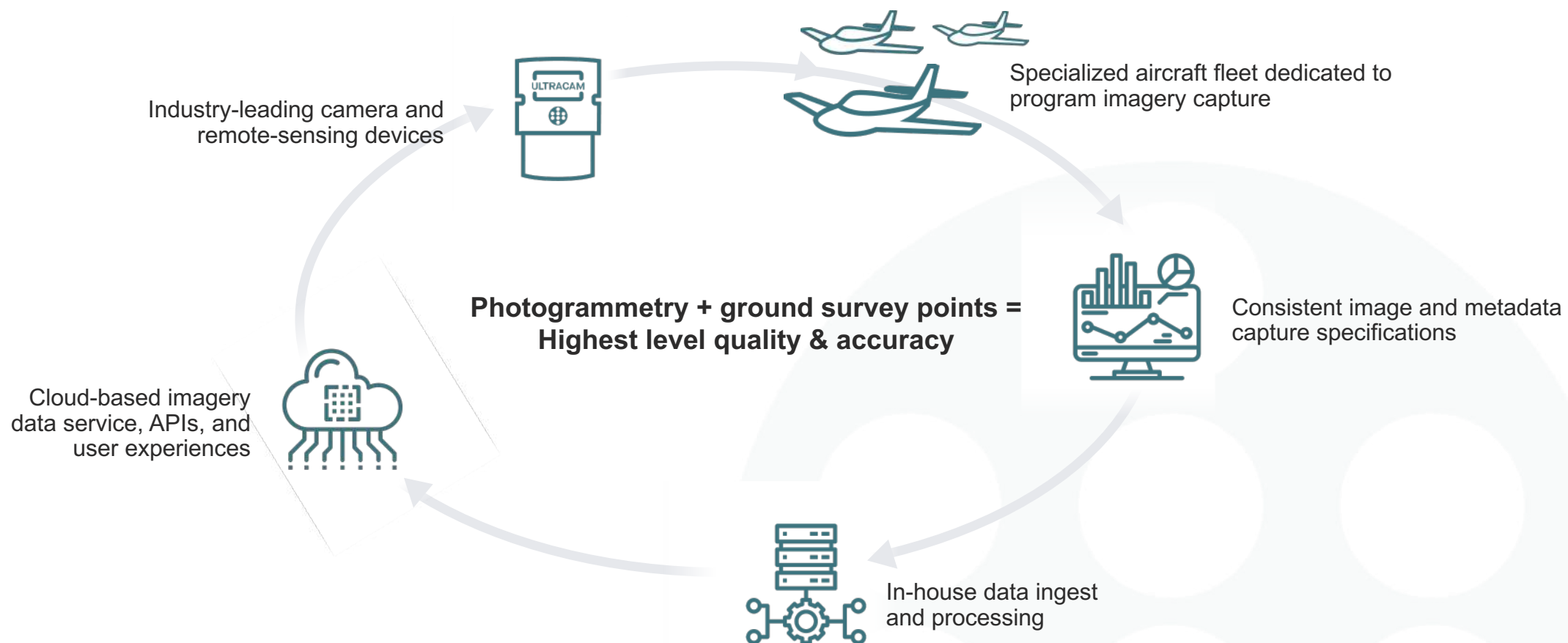
Access Vexcel's cloud-based data whenever you need it; integrate it into your preferred third-party platform

HISTORY OF PHOTOGRAMMETRY EXCELLENCE

- Market-leading cameras and sensors
- 30-year leader in imaging space for aerial cameras and sensor technology
- Dedicated fleet of aerial survey aircraft with regional hubs
- Best-in-class image processing pipeline



TECHNOLOGY ADVANTAGE





AWARD-WINNING CAMERA SENSORS



- Planes are outfitted with UltraCam sensors, designed by Vexcel Imaging



- Latest, most advanced technology available:
 - CMOS-based architecture
 - Revolutionary Adaptive Motion Compensation



COMPREHENSIVE COVERAGE IN 20+ COUNTRIES

GLOBAL FOOTPRINT

Western Europe

Andorra, Austria, Belgium, Denmark, Germany, France, Italy, Ireland, Liechtenstein, Luxembourg, Portugal, Netherlands, Monaco, San Marino, Spain, Switzerland, and Vatican City

Canada

USA

United Kingdom

NEW EXPANSION!

Puerto Rico

GLOBAL FOOTPRINT



New Zealand



NEW EXPANSION!
Japan





EUROPEAN DATA PROGRAM

URBAN AREA COLLECTION

- Multiple imagery & data products
- 7.5cm / 2.9" resolution
- 3-year refresh rate
- Nadir & Oblique imagery
- Major cities and urban extents
- UltraCam Osprey sensors



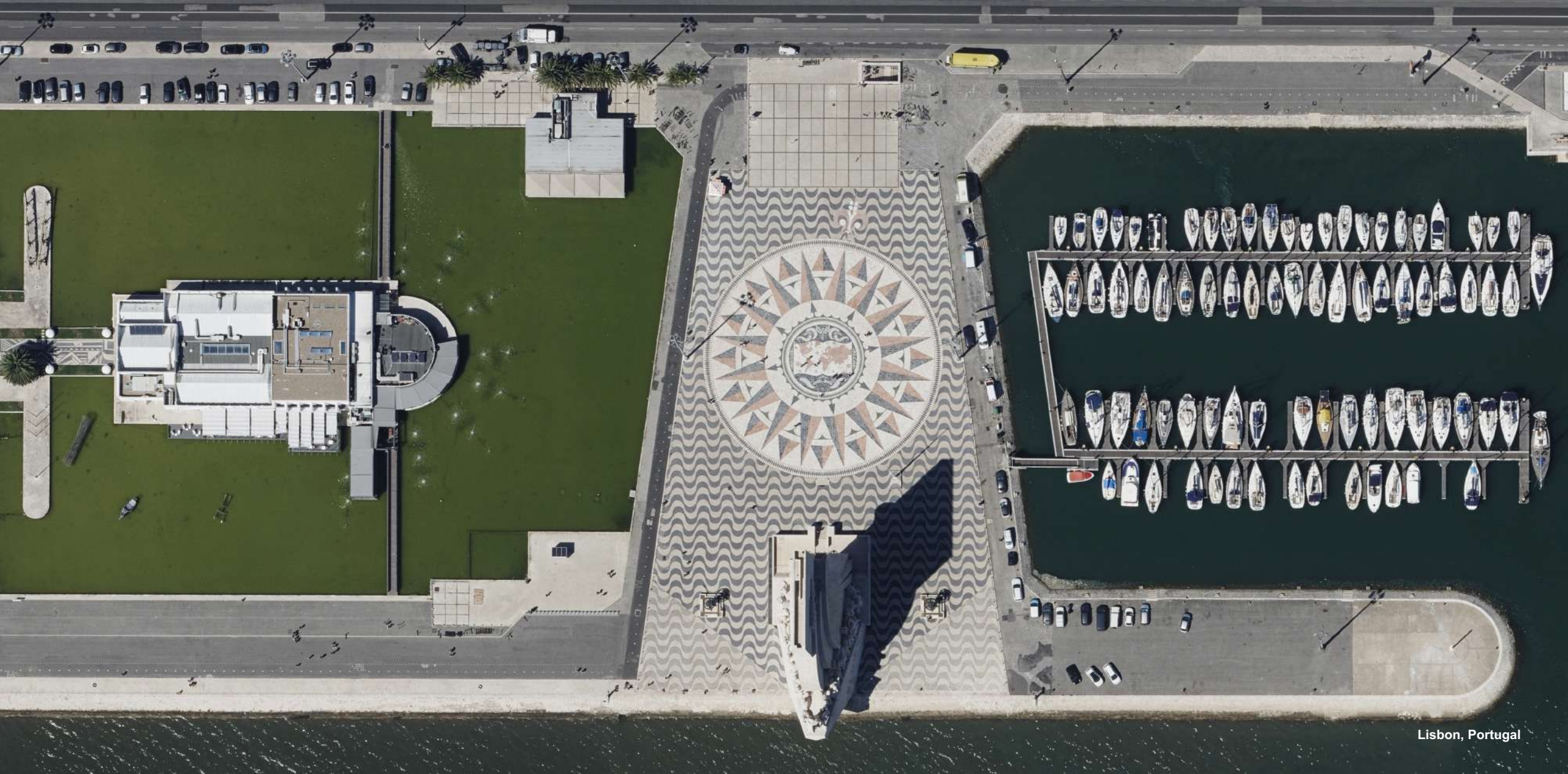


A detailed map of Europe showing major cities and distances between them. The map is color-coded by country: United Kingdom (light blue), Ireland (light green), France (light orange), Germany (light yellow), Poland (light green), Czech Republic (light blue), Slovakia (light orange), Austria (light yellow), Hungary (light orange), Romania (light green), Bulgaria (light green), Greece (light green), Italy (light yellow), Spain (light orange), Portugal (light orange), and others. Major cities are marked with red dots and labeled. Distances between cities are indicated by numbers. The map includes the North Sea, Baltic Sea, English Channel, Bay of Biscay, Tyrrhenian Sea, and Adriatic Sea. The map is oriented with North at the top.



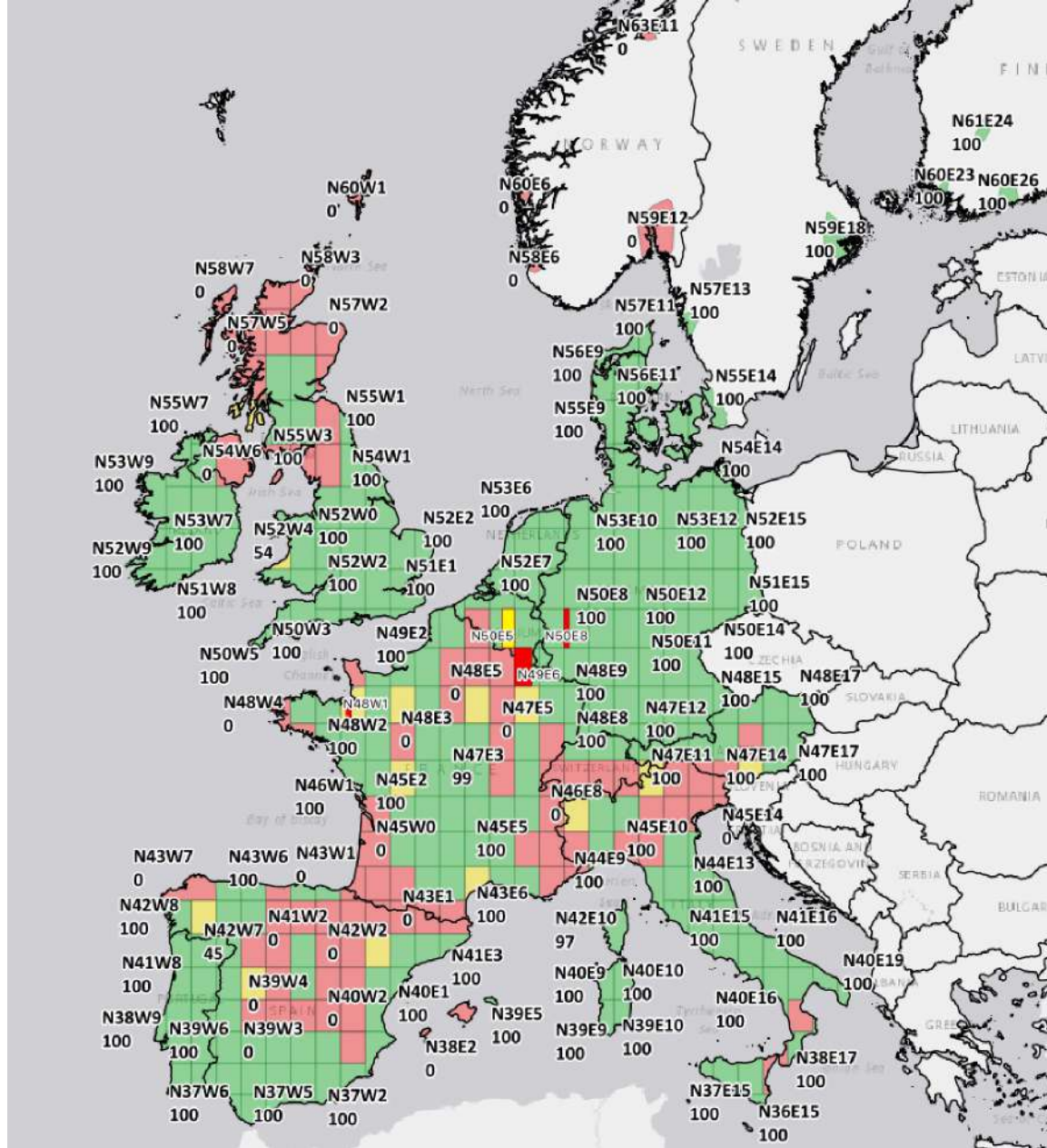
WIDE AREA COLLECTION

- Multiple top-down imagery and data products
- Nationwide, from coast-to-coast—city and rural
- 100% of population covered in 12 countries + principalities
- 15-20cm / 5.9-7.8" resolution
- UltraCam Condor sensors



Lisbon, Portugal

WIDE AREA COVERAGE



PRODUCTS & ACCURACY



Best-In-Class Imagery & Data



Oblique

- Collected at a 45° perspective
- Detailed view of properties and neighborhoods
- 7.5cm resolution
- Captured in the Urban Area program



True Ortho

- No distortion (building lean), color balanced, top-down
- Insight for rooftops and property surroundings
- 7.5cm resolution
- Captured in the Urban Area program



REFRESH @ 15CM

Ortho

- Straight-down aerial view of buildings and parcels
- Insight for rooftops and property surroundings
- 15-20 cm resolution
- Captured in the Wide Area Program

Best-In-Class Imagery & Data



COMING

Building Footprints & Property Attributes

- Highly detailed geometry of building outlines
- Enhanced visualization for property
- Identify attributes such as swimming pools, trampolines, solar panels, vegetation, and more

Multispectral Imagery

- Near-infrared channel on camera sensors
- Optimal for classification on vegetation and fire risk
- Wide and Urban Programs

Elevate

- Digital Surface Models
- Digital Terrain Models
- Wide and Urban Programs

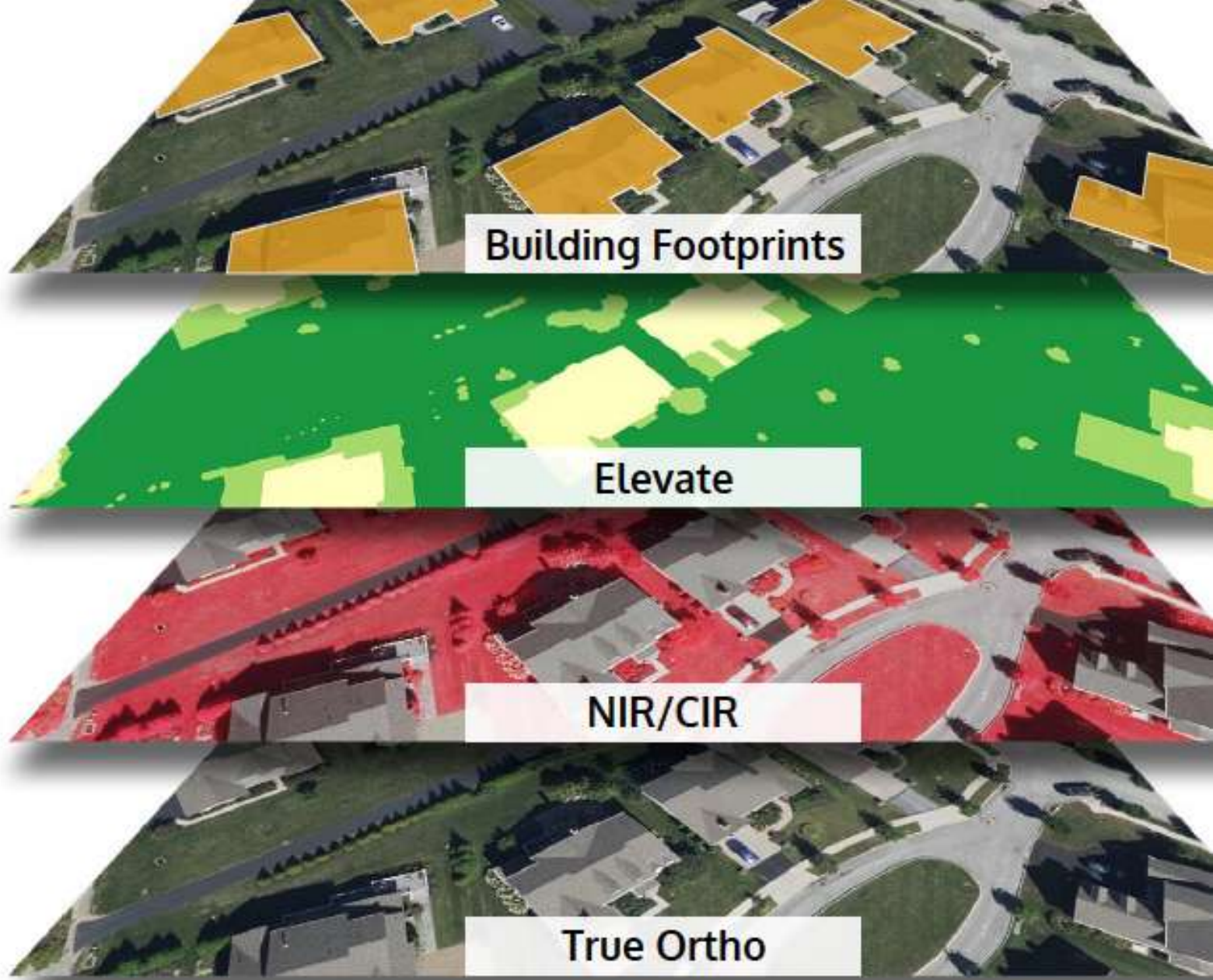
Disaster

- Longest running disaster collection program in U.S.
- Imagery delivered within 24 hours after capture
- Before/after comparisons

PIXEL-TO-DATA MATCH

Vexcel gives you access to geospatial data with a **pixel-to-data match** across multiple products and derivatives.

Every image, every data point is consistently accurate with **no shifts or irregularities**.



UNMATCHED ACCURACY

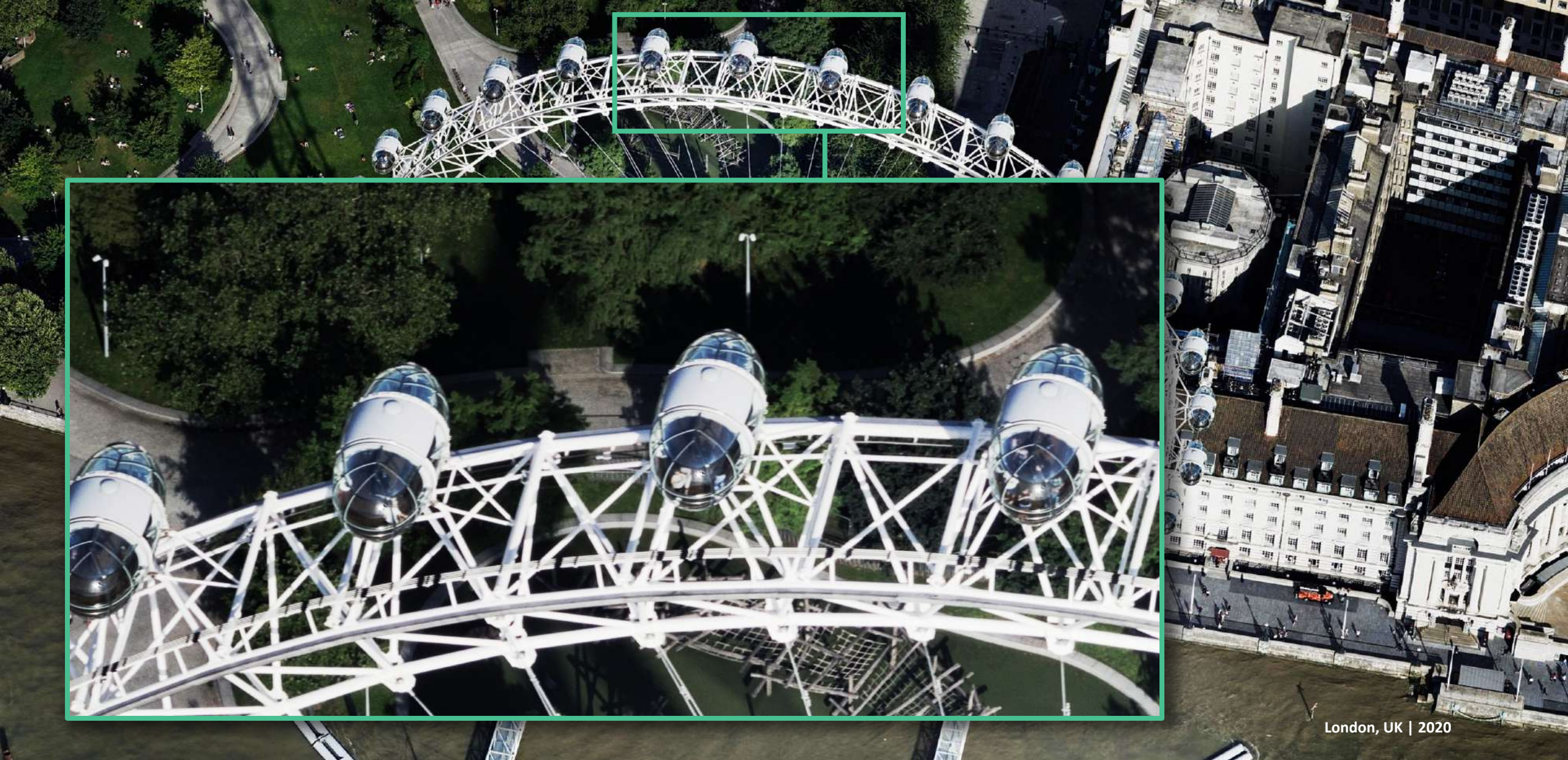
Vexcel matches its data against professional-grade ground control points (GCPs).

- Accurate within a two-pixel standard deviation (urban area)
- Improves 3D measurements
- Powers more reliable AI/ML solutions

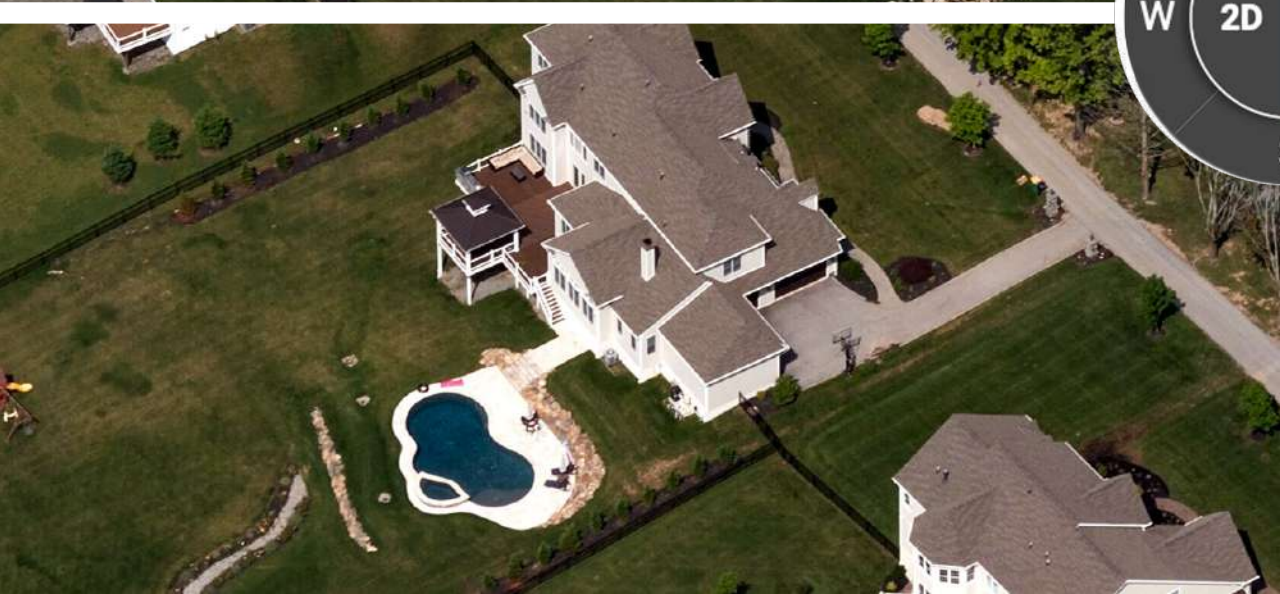




London, UK | 2020



London, UK | 2020

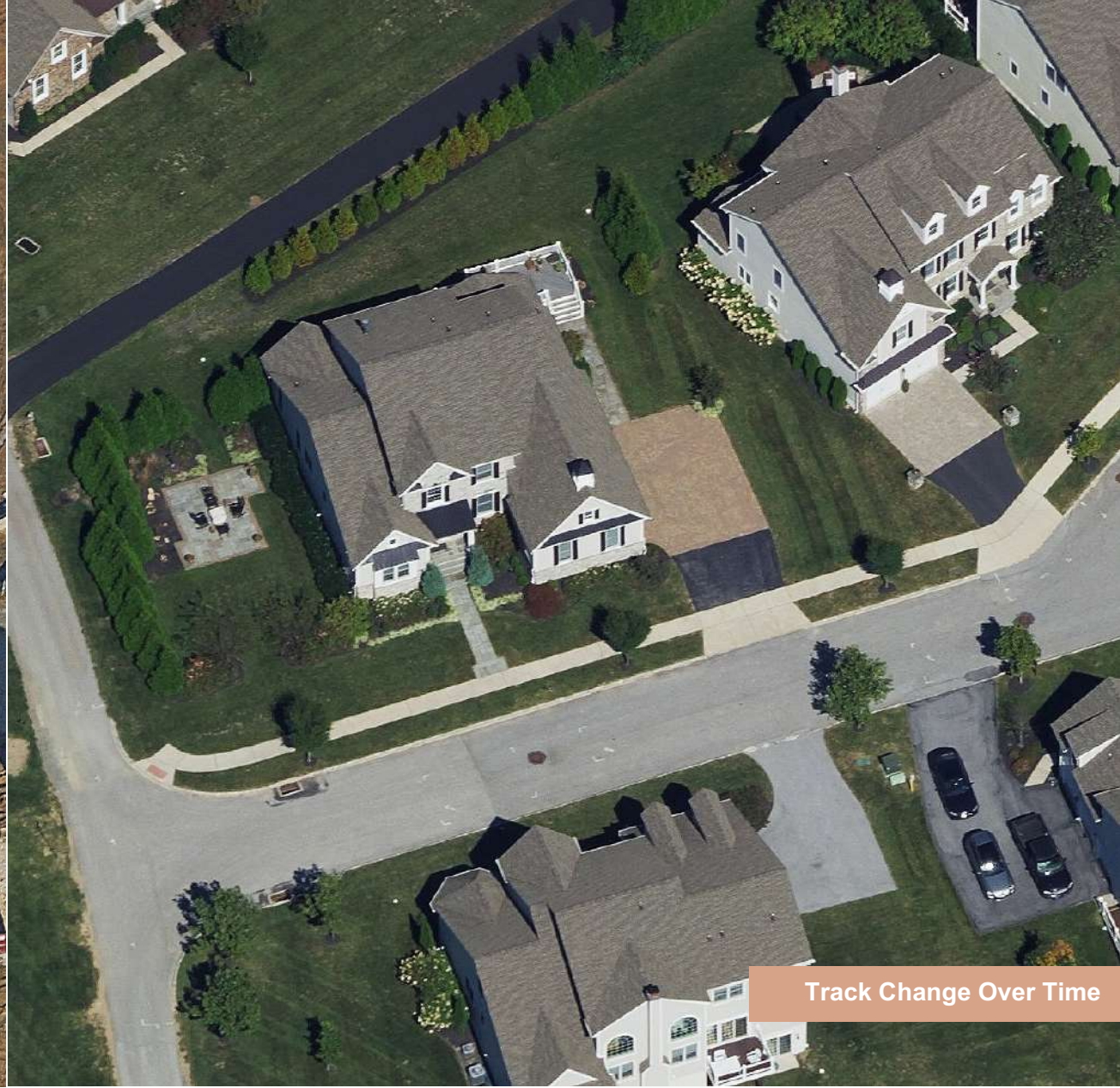




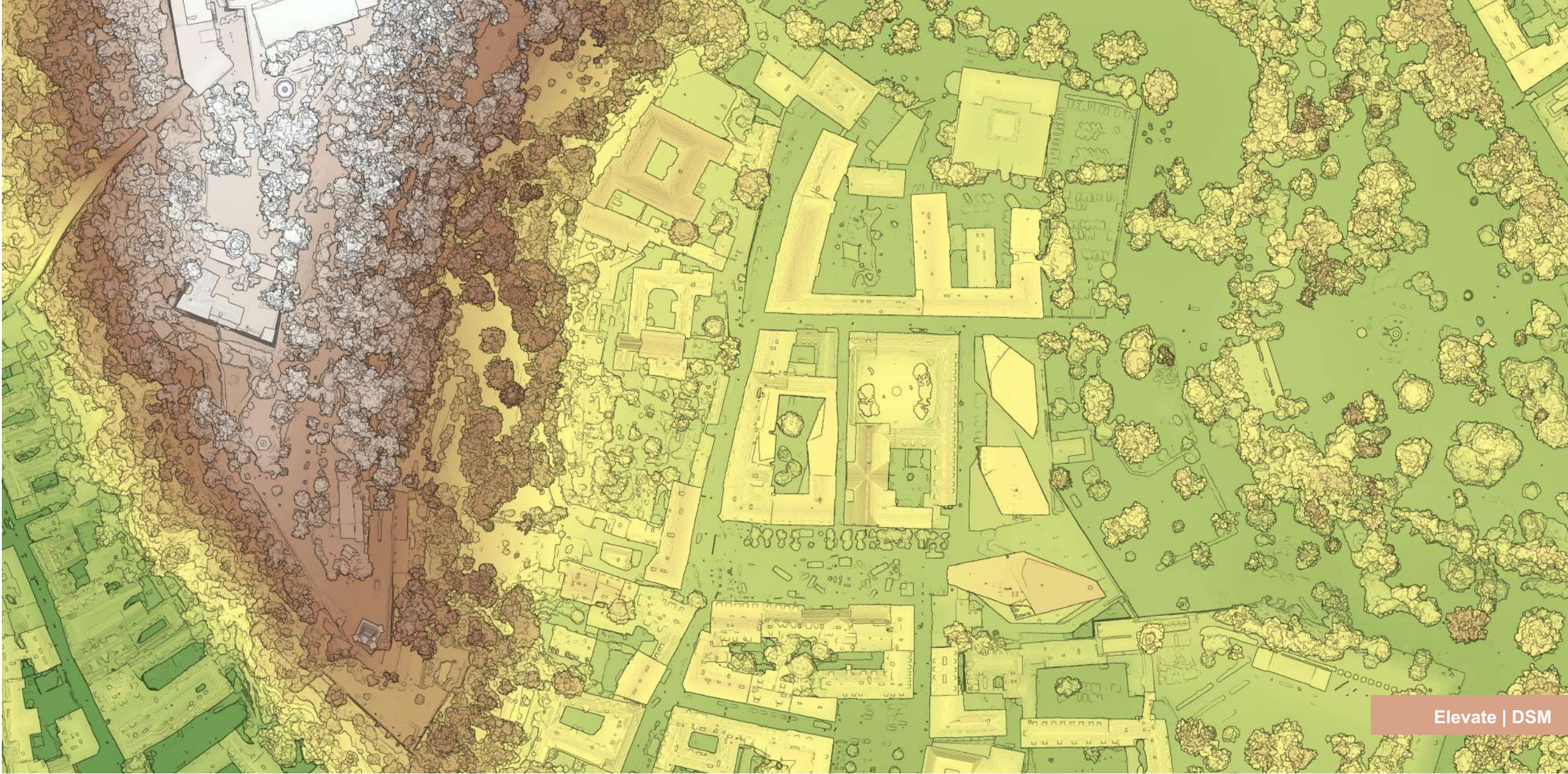
Property Attributes | TRUE ORTHO



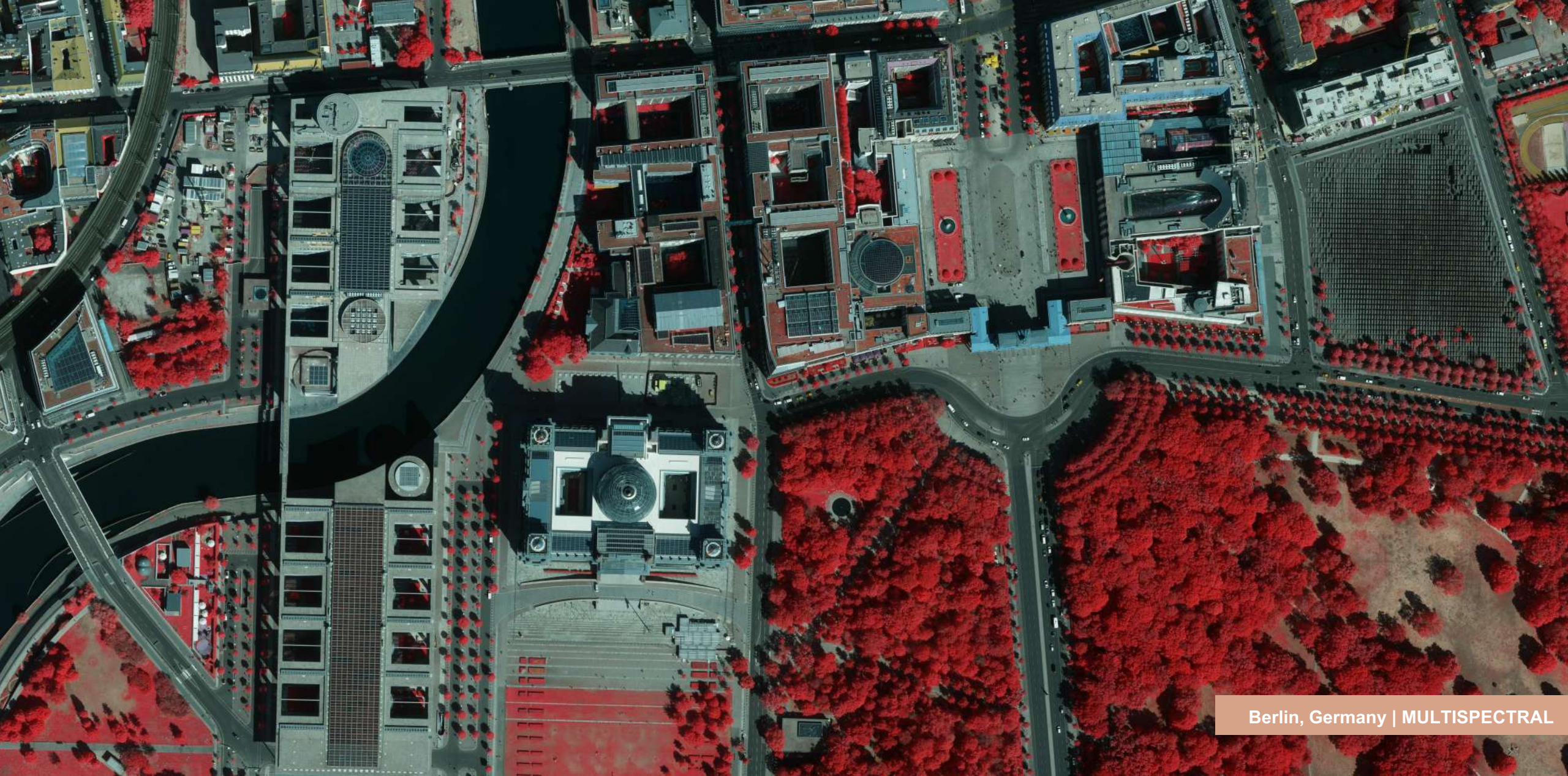
Minden, NV | ORTHO



Track Change Over Time



Elevate | DSM



Berlin, Germany | MULTISPECTRAL



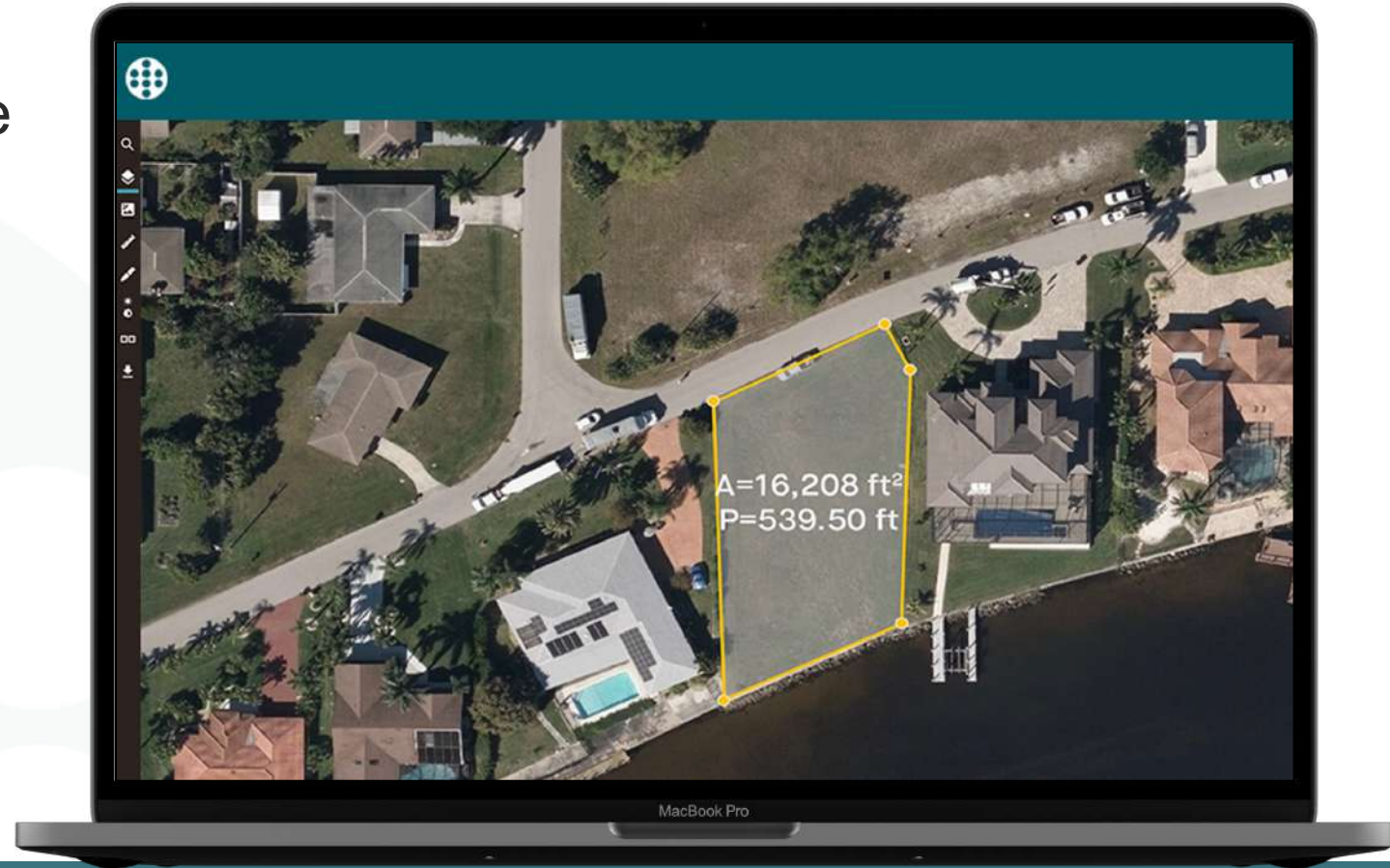
Building Footprints



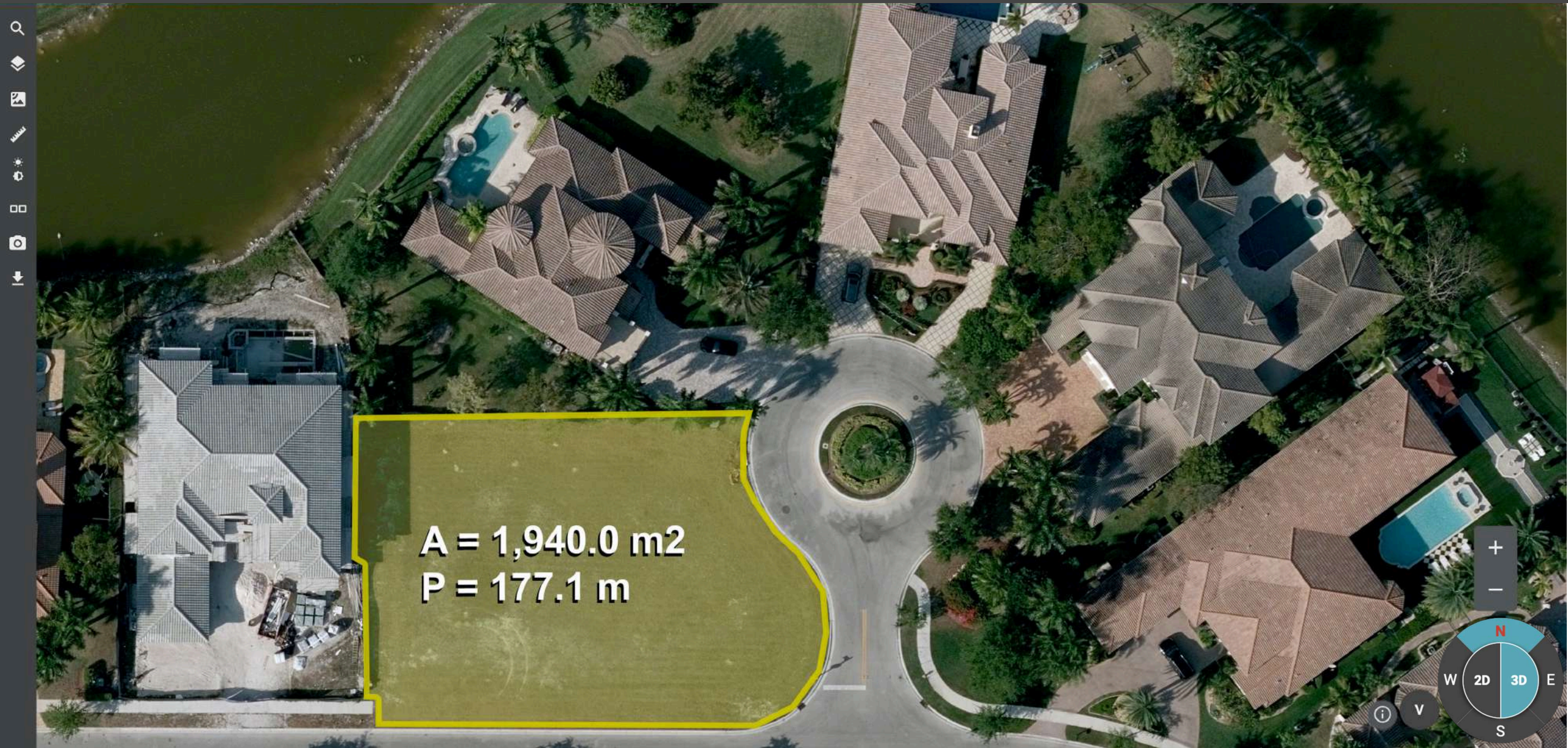
PLATFORMS & INTEGRATIONS

CLOUD-BASED LOCATION CONTENT

- Access vast library of imagery online, wherever you need to be
- Vexcel Viewer – web-based platform
 - 2D & 3D measurements
 - area, height, slope
 - Side-by-side comparison
 - View historical imagery
- *On-prem delivery also available*







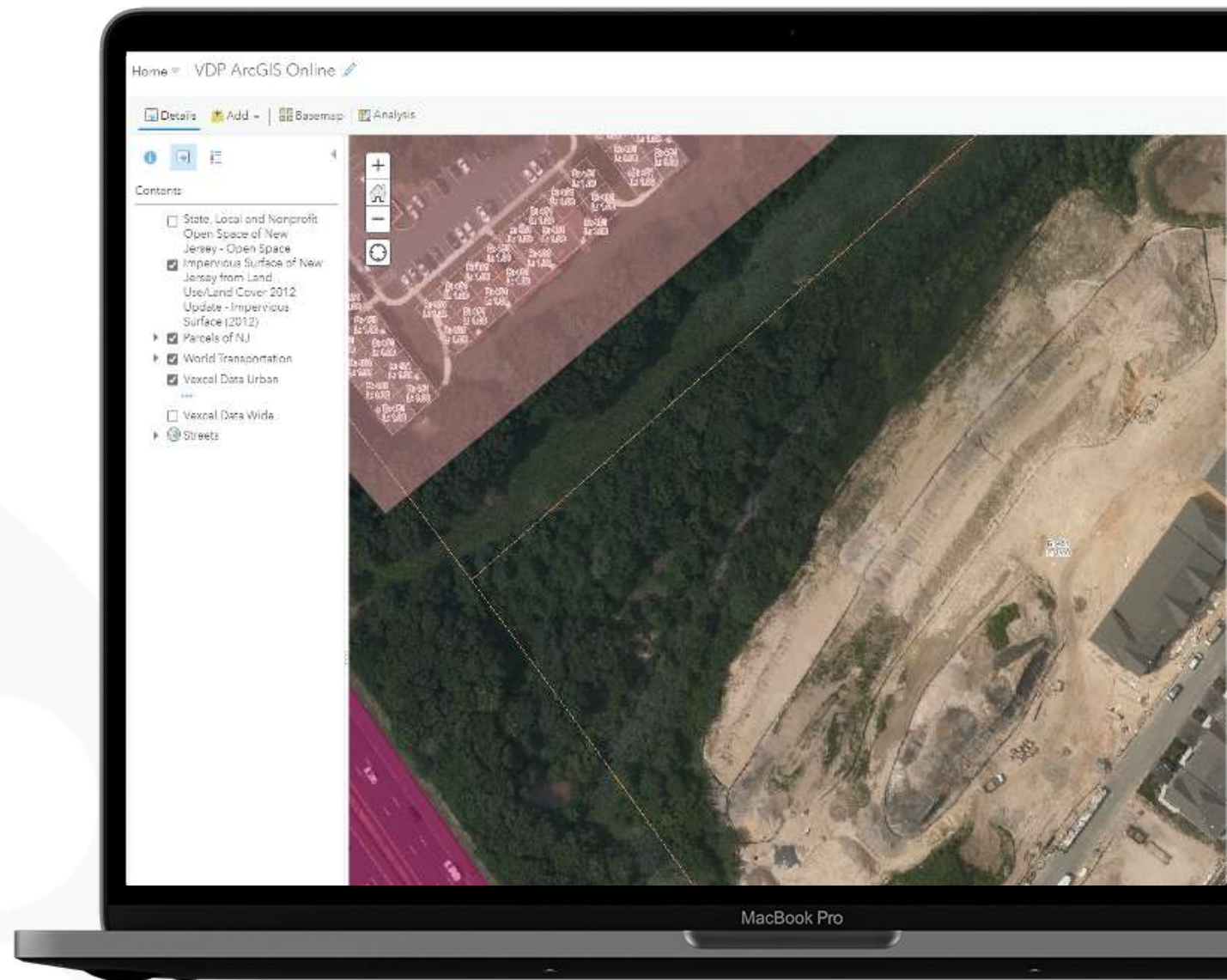
A = 1,940.0 m²
P = 177.1 m



H=326.0 m

INTEGRATE DATA INTO YOUR PLATFORM

- Bring Vexcel data into your preferred third-party platform via:
 - ArcGIS
 - REST APIs
 - Standard map services (WMTS)
 - And more



SHAPE THE FUTURE WITH AERIAL DATA



Highest photogrammetric quality for enhanced, trusted analytics



Best-in-class image processing pipeline



Multiple imagery and data products; see more than just an image



Coverage where you need it, urban and rural across U.S.



Cloud-based data, available in your preferred GIS/CAD platform



Consistently reliable data with unmatched accuracy